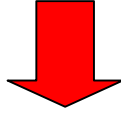


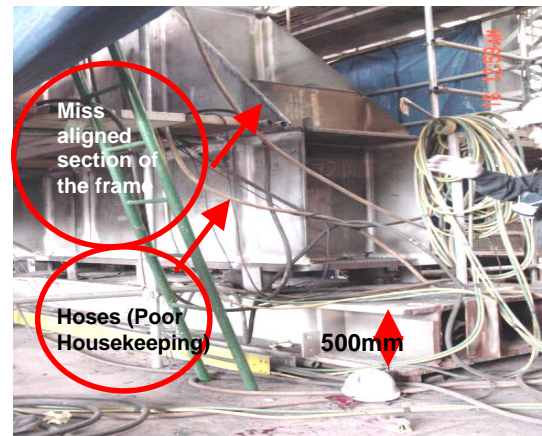
- Good Housekeeping is not practiced and enforced.
- Adequate pre job planning is not conducted to identify and evaluate potential hazards.
- Safe Work Practices are not followed and enforced.
- Hazards associated with working at elevation less than 1.8m are not recognized and communicated.

THIS MIGHT HAPPEN TO YOU



Incident Description

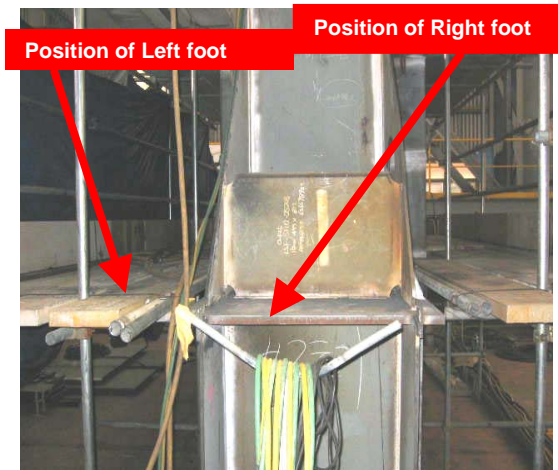
On April 15, 2006 at about 1330, a fitter was working on a load-out support frame (LSF) to correct mis-aligned section of the frame before mounting a steel plate. He fell from a height of 1.8m while attempting to move towards the ladder attached to the scaffold. He hit the left side of his head (behind his left ear) on the corner of a steel working table below the LSF. Shortly before the fall, the fitter was positioned with his left foot on the scaffold and the right foot on the LSF. In the process of moving towards the ladder, he tripped on an object or slipped and then fell. No eyewitness was present to confirm the actual cause of the incident. The fitter sustained a fractured skull (base) and laceration, which caused some bleeding, and immediate swelling to the back of the head. He was immediately admitted to the hospital and was placed on life support; he passed away on May 1, 2006.



Scene of Incident

What Went Wrong

1. Primary fall protection devices were not considered for heights below 1.8m. Contractor's risk evaluation procedure does not consider heights less than 2.0m a hazard.
2. The deceased did not recognize the potential hazards associated with his positioning.
3. Good housekeeping around the worksite was not enforced. Hoses were not neatly stowed at the work site thereby constituting potential trip hazards.
4. Work scope was changed when the deceased needed to work outside the scaffolding. JSA was not revised to include hazard of working outside primary fall protection.
5. Job and Safety supervision was less than adequate.



Lessons Learned

- Working at elevations should be properly assessed for potential hazard irrespective of the height from grade.
- Always ensure appropriate use of primary fall protection.
- Always ensure good housekeeping at and around work areas.
- Always revise risk assessment and/or JSA whenever there is a change in work scope or condition.
- Always ensure the presence of adequate job and safety supervision at all worksites. Always conduct frequent audits to monitor compliance with JSA and housekeeping requirements

